

BERNAT® OVER THE RAINBOW CROCHET SNUGGLE SACK | CROCHET



CROCHET | SKILL LEVEL: **EXPERIENCED**

ABBREVIATIONS

Approx = Approximately

Beg = Begin(ning)

Ch = Chain(s)

Dc = Double crochet

Dc5tog = (Yoh and draw up a loop in next stitch. Yoh and draw through 2 loops on hook) 5 times. Yoh and draw through all loops on hook

Dcbp = Yoh and draw up a loop around post of next stitch at back of work, inserting hook from left to right. (Yoh and draw through 2 loops on hook) twice.

Dcfp = Yoh and draw up a loop around post of next stitch at front of work, inserting hook from right to left. (Yoh and draw through 2 loops on hook) twice.

Hdc = Half double crochet

Hdcbb = Half double crochet in horizontal bar created below stitch in previous row (bar is below loops worked on WS – see diagram).

Pat = Pattern

PM = Place marker

Rem = Remain(ing)

Rep = Repeat

Rnd(s) = Round(s)

RS = Right side

Sc = Single crochet

Sc2tog = Draw up a loop in each of next 2 stitches. Yoh and draw through all loops on hook.

Sl st = Slip stitch

Sp(s) = Space(s)

St(s) = Stitch(es)

Tog = Together

Tr = Treble crochet

WS = Wrong side

Yoh = Yarn over hook

MATERIALS

Bernat® Baby Blanket™ (10.5 oz/300 g; 220 yds/201 m)
Contrast A White (04005) **2 balls or 430 yds/393 m**

Bernat® Blanket™ Brights (5.3 oz/150 g; 108 yds/98 m)
Contrast B Busy Blue (13005) **3 balls or 233 yds/213 m**

Contrast C Carrot Orange (13002) **2 balls or 145 yds/132 m**

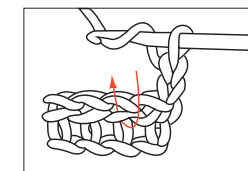
Contrast D School Bus Yellow (13003) **2 balls or 214 yds/196 m**

Contrast E Go-Go Green (13004) **3 balls or 289 yds/234 m**

Contrast F Race Car Red (13001) **3 balls or 273 yds/249 m**

Bernat® Blanket™ (10.5 oz/300 g; 220 yds/201 m)
Contrast G Coal (10040) **1 ball or 38 yds/35 m**

Sizes U.S. K/10½ (6.5 mm) and U.S. L/11 (8 mm) crochet hooks **or size needed to obtain gauge.** Stitch markers.



Hdcbb diagram

Note:
 Diagram shows WS of work

SIZE

One size to fit child ages 4 to 8 years.
 Approx 26" [66 cm] wide x 55" [139.5 cm] long.

GAUGE

7 dc and 4 rows = 4" [10 cm] with larger hook.

INSTRUCTIONS

Notes:

- When joining new color, work to last 2 loops on hook of last st. Draw new color through 2 loops, then proceed in new color.
- Carry color not in use across top of previous row and work sts around it to prevent stranding.
- Ch 3 at beg of rnd counts as dc throughout.
- Join and then turn work at end of each rnd, alternating working from RS and WS in order to create a straight seam.

SACK

With larger hook and A, ch 90. Join with sl st to form ring, being careful not to twist chain.

Gingham Section:

1st rnd: (RS). Ch 3. 1 dc in each of next 2 ch. With B, 1 dc in each of next 3 ch. *With A, 1 dc in each of next 3 ch. With B, 1 dc in each of next 3 ch. Rep from * around. Join A with sl st to top of ch-3. **Turn.**

2nd rnd: (WS). With A, sl st in next dc. Ch 3. 1 dc in each of next 2 dc. With B, 1 dc in each of next 3 dc. *With A, 1 dc in each of next 3 dc. With B, 1 dc in each of next 3 dc. Rep from * around. Join A with sl st to top of ch-3. **Turn.**

Rep last rnd for Gingham Pat noting RS and WS will alternate until work from beg measures approx 15" [38 cm], ending on a WS rnd. Break A and B.

Yellow Brick Road Section: With RS facing and larger hook, join C with sl st to first dc. Proceed in Brick Pat as follows:

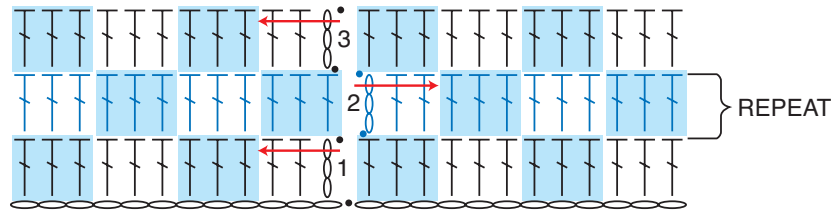
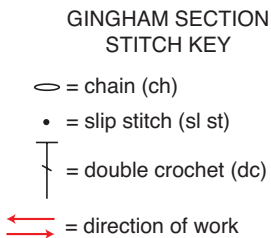
1st rnd: (RS). Ch 1. Working in back loops only, 1 sc in first dc. Ch 1. Skip next dc. *1 sc in each of next 5 dc. Ch 1. Skip next dc. Rep from * to last 4 dc. 1 sc in each of next 4 dc. Join D with sl st to first sc. **Turn.**

2nd rnd: (WS). With D, ch 3. Working in front loops only, 1 dc in each sc and ch-1 sp around. Join C with sl st to top of ch-3. **Turn.**

3rd rnd: (RS). With C, ch 1. Working in back loops only, 1 sc in same sp as last sl st. *Working in front of previous rows, 1 tr in next skipped dc 2 rows below.

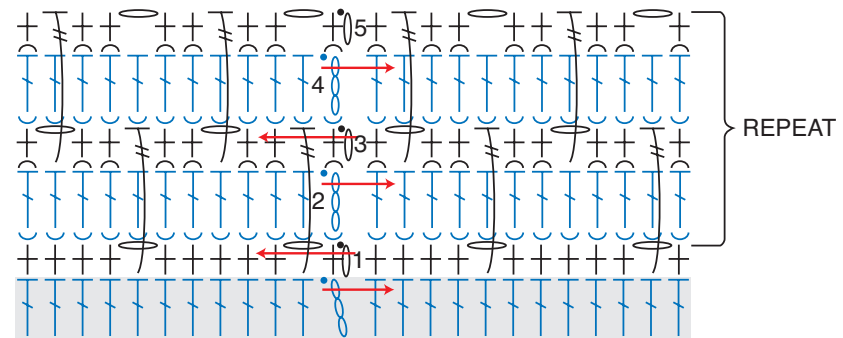
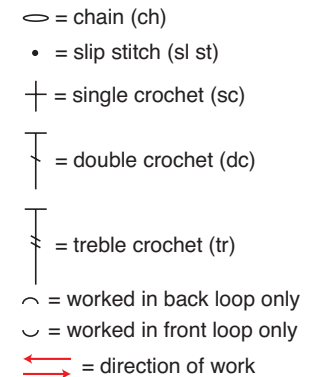
Skip next dc (behind tr just worked). 1 sc in each of next 2 dc. Ch 1. Skip next dc. 1 sc in each of next 2 dc. Rep from * to last 4 dc. 1 sc in each of next 2 dc. Ch 1. Skip next dc. 1 sc in last dc. Join D with sl st to first sc. **Turn.**

4th rnd: (WS). As 2nd rnd.



GINGHAM SECTION

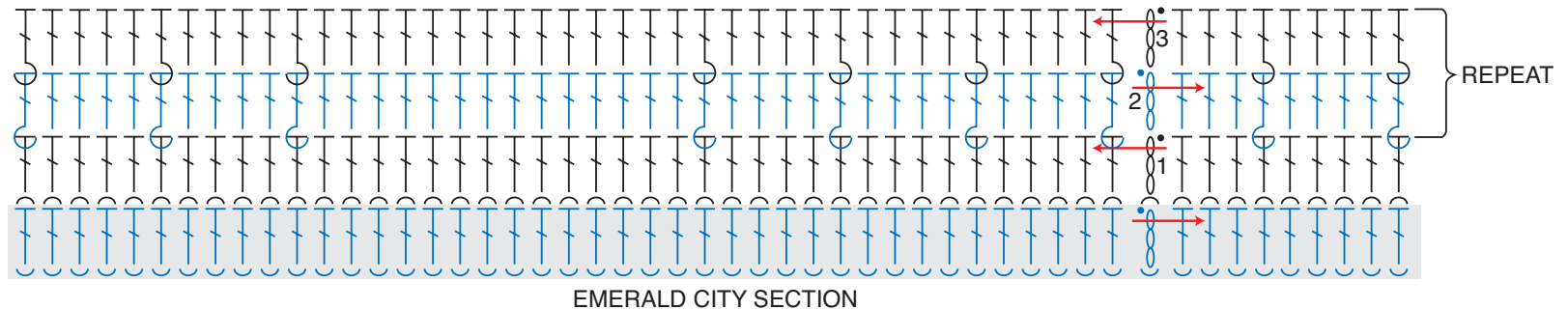
YELLOW BRICK ROAD STITCH KEY



YELLOW BRICK ROAD SECTION

**EMERALD CITY
STITCH KEY**

- = chain (ch)
- = slip stitch (sl st)
- = double crochet (dc)
- = front post dc (dcfp)
- = back post dc (dcbp)
- ⤴ = worked in back loop only
- ⤵ = worked in front loop only
- ↔ = direction of work



5th rnd: (RS). With C, ch 1. Working in back loops only, 1 sc in same sp as last sl st. Ch 1. Skip next dc. 1 sc in each of next 2 dc. Working in front of previous rows, 1 tr in next skipped dc 2 rows below. Skip next dc (behind tr just worked). *1 sc in each of next 2 dc. Ch 1. Skip next dc. 1 sc in each of next 2 dc. Working in front of previous rows, 1 tr in next skipped dc 2 rows below. Skip next dc (behind tr just worked). Rep from * to last dc. 1 sc in last dc. Join D with sl st to first sc. **Turn.**

Rep 2nd to 5th rnds for Brick Pat until work from beg measures approx 30" [76 cm], ending on a RS rnd.

Emerald City Section:

With RS facing and larger hook, join E with sl st to first sc.

1st rnd: (RS). Ch 3. Working in back loops only, 1 dc in each st around. Join with sl st to top of ch-3. **Turn.**

2nd rnd: (WS). Ch 3. Working in both loops, 1 dc in each of next 3 dc. (Dcbp around next dc. 1 dc in each of next 4 dc) twice. Dcbp around next dc. 1 dc in each of

next 14 dc. (Dcbp around next dc. 1 dc in each of next 4 dc) 6 times. Dcbp around next dc. 1 dc in each of next 14 dc. (Dcbp around next dc. 1 dc in each of next 4 dc) 3 times. Dcbp around next dc. Join with sl st to top of ch-3. **Turn.**

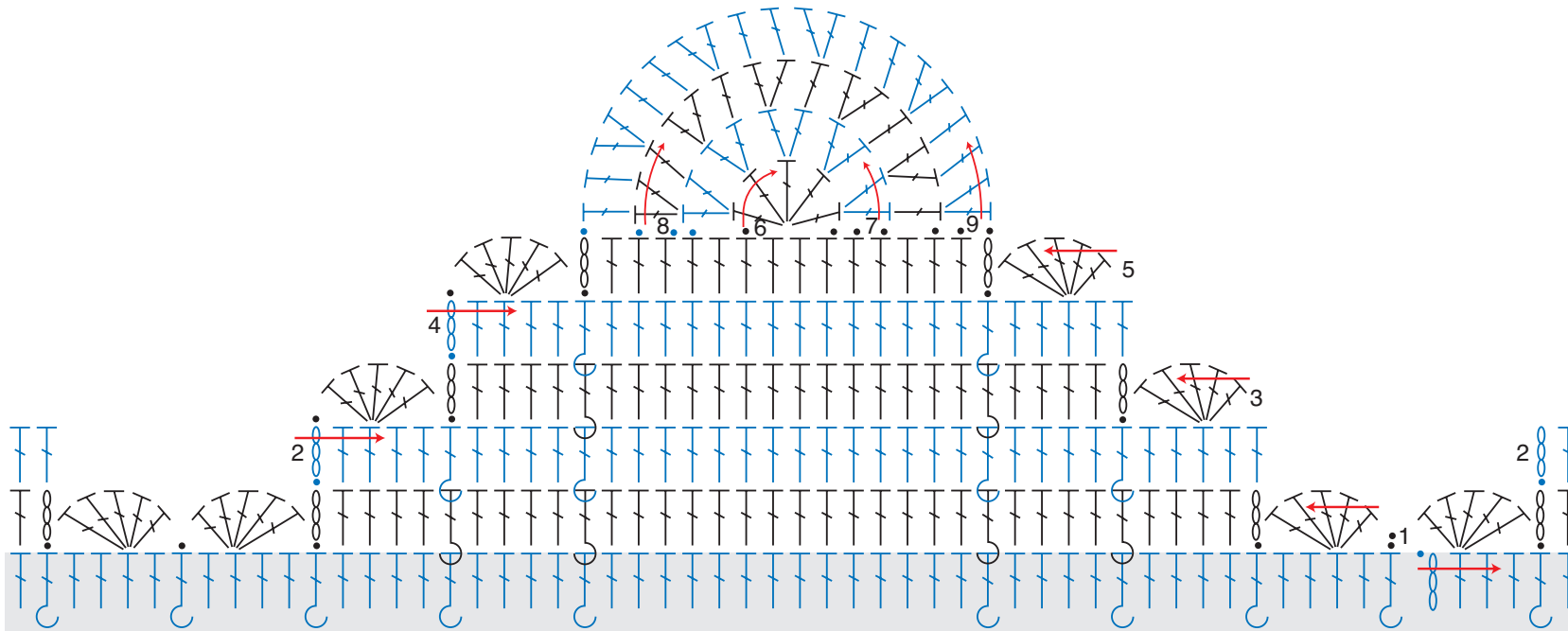
3rd rnd: (RS). Ch 3. Dcfp around first dcbp. 1 dc in each of next 4 dc. (Dcfp around next dcbp. 1 dc in each of next 4 dc) twice. Dcfp around next dcbp. 1 dc in each of next 14 dc. (Dcftp around next dcbp. 1 dc in each of next 4 dc) 6 times. Dcftp around next dcbp. 1 dc in each of next 14 dc. (Dcftp around next dcbp. 1 dc in each

of next 4 dc) twice. Dcftp around next dcbp. 1 dc in each of next 3 dc. Join with sl st to top of ch-3. **Turn.**

Rep last 2 rnds until work from beg measures 39" [99 cm], ending on a WS rnd.

Shape Building Section: See diagram on page 4.

1st rnd: (RS). Sl st in first dcbp. *Skip next st. 5 dc in next dc. Skip next 2 dc. Sl st in next dcbp. Ch 3 (counts as dc). (1 dc in each of next 4 dc. Dcftp around next dcbp) twice. 1 dc in each of next 14 dc. (Dcftp around next dcbp. 1 dc in



SHAPE BUILDING SECTION

SHAPE BUILDING STITCH KEY

- = chain (ch)
- = slip stitch (sl st)
- ┆ = double crochet (dc)
- ┆ = front post dc (dcfp)
- ┆ = back post dc (dcbp)
- ⤴ = worked in back loop only
- ⤵ = worked in front loop only
- ↔ = direction of work

each of next 4 dc) twice. Ch 3. PM on first ch. Slip st in next dcbp. Skip next 2 dc. 5 dc in next dc. Skip next dc. Sl st in next dcbp. Rep from * once more, ending with sl st in first dcbp of rnd. Fasten off. **Turn.**

Back: With WS facing, join E with sl st at first marked ch. Beg working in rows:

2nd row: (WS). Ch 3. (1 dc in each of next 4 dc. Dcbp around next dcfp) twice. 1 dc in each of next

14 dc. (Dcbp around next dcfp. 1 dc in each of next 4 dc) twice. 1 dc in top of ch-3. Turn.

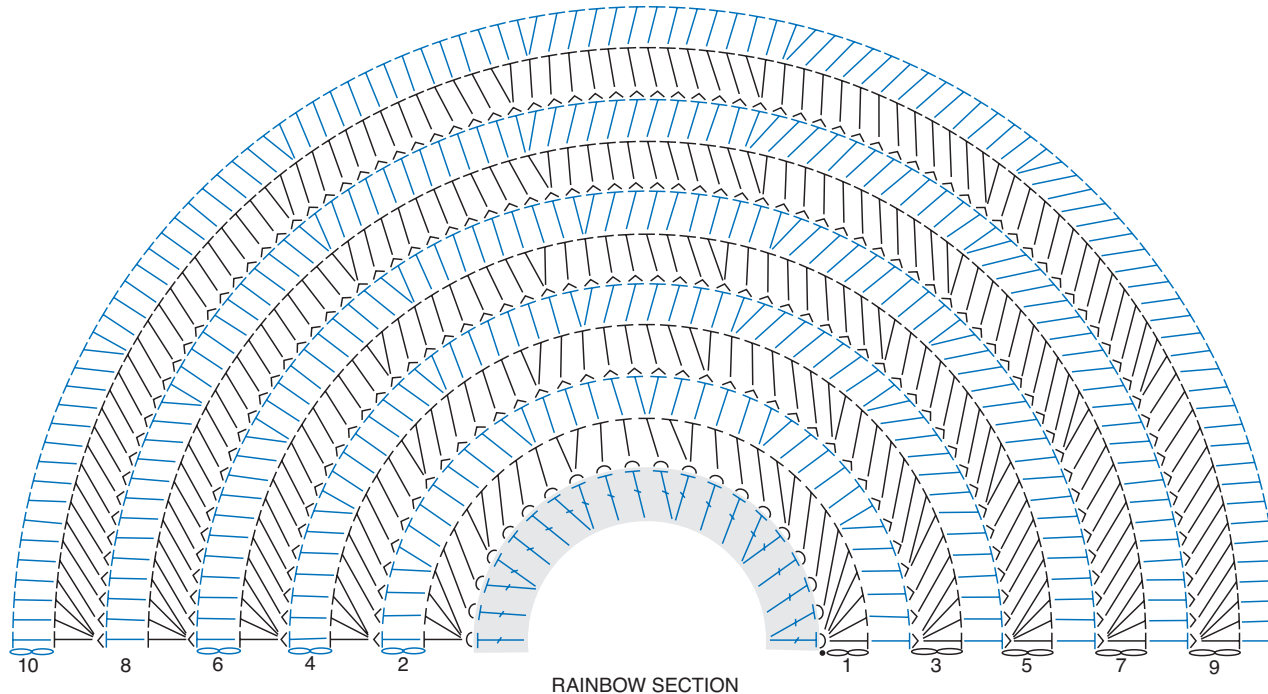
3rd row: (RS). Skip first 2 dc. 5 dc in next dc. Skip next 2 dc. Sl st in next dcbp. Ch 3 (counts as dc). 1 dc in each of next 4 dc. Dcfp around next dcbp. 1 dc in each of next 14 dc. Dcfp around next dcbp. 1 dc in each of next 4 dc. Ch 3. PM on first ch. Sl st in next dcbp. Skip next 2 dc. 5 dc in next dc. Skip next dc. Sl st in top of ch-3. Fasten off. Turn.

4th row: (WS). Join E with sl st at last marked ch. Ch 3. 1 dc in each of next 4 dc. Dcbp around next dcfp. 1 dc in each of next 14 dc. Dcbp around next dcfp. 1 dc in each of next 4 dc. 1 dc in top of ch-3. Turn.

5th row: Skip first 2 dc. 5 dc in next dc. Skip next 2 dc. Sl st in next dcbp. Ch 3. PM on first ch. 1 dc in each of next 14 dc. Ch 3. Sl st in next dcbp. Skip next 2 dc. 5 dc in next dc. Skip next dc. Sl st in top of ch-3. Fasten off. Turn.

6th row: Skip first 5-dc shell. Join E with sl st in 7th dc of center 16 dc group. Skip next dc. 5 dc between next 2 dc (8th and 9th dc of center 16 dc group). Skip next dc. Sl st in each of next 3 dc. Turn.

7th row: 2 dc in each dc to end of row. Working into 5th row, skip next dc. Sl st in each of next 3 dc. Turn.



- RAINBOW STITCH KEY**
- = chain (ch)
 - = slip stitch (sl st)
 - ┆ = half double crochet (hdc)
 - ┆ = half double crochet in back bar (hdcbb)
 - ∧ = worked in back loop only

8th row: 2 dc in first dc. 1 dc in next dc. (2 dc in next dc. 1 dc in next dc) 4 times. Working into 5th row, skip next dc. Sl st in each of next 3 dc. Turn.

9th row: 2 dc in first dc. 1 dc in each of next 2 dc. (2 dc in next dc. 1 dc in each of next 2 dc) 4 times. Working into 5th row, skip next dc. Sl st in next dc. Fasten off.

Front: With RS facing, join E with sl st to 2nd marked ch of 1st rnd of Emerald City Section. Work 2nd to 9th rows as given for Back.

Rainbow Section

Note: Ch 2 at beg of rows **does not** count as hdc throughout.

With RS Front of Sack facing and larger hook, join F with sl to to first dc of 9th row of Emerald City Section.

1st row: (RS). Ch 2 (does not count as hdc). Working in back loops only, 5 hdc in same sp as last sl st. *1 hdc in each of next 3 dc. 2 hdc in next dc. Rep from * to last 3 dc. 1 hdc in each of next 2 dc. 4 hdc in last dc. 31 hdc. Turn.

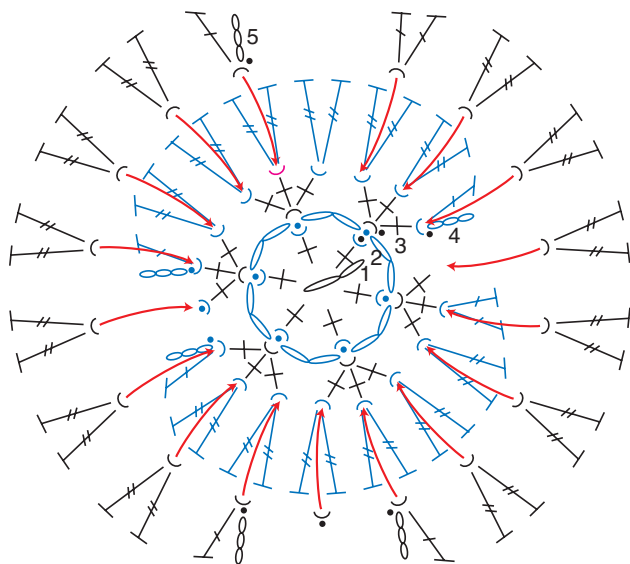
2nd row: Ch 2. Working in both loops, 1 hdc in each of first 3 hdc. *2 hdc in next hdc. 1 hdc in each of next 4 hdc. Rep from * last 3 hdc. 1 hdc in last 3 hdc. 36 hdc. Fasten off. Turn.

3rd row: Join C with sl st to first hdc. Ch 2. 4 hdcbb in first hdc. 1 hdcbb in each of next 2 hdc. *2 hdcbb in next hdc. 1 hdcbb in each of next 5 hdc. Rep from * to last 3 hdc. 1 hdcbb in each of next 2 hdc. 4 hdcbb in last hdc. 47 hdc. Turn.

4th row: With C, ch 2. 1 hdc in each of first 6 hdc. *2 hdc in next hdc. 1 hdc in each of next 6 hdc. Rep from * to last 6 hdc. 1 hdcbb in each of last 6 hdc. 52 hdc. Fasten off. Turn.

5th row: Join D with sl st to first hdc. Ch 2. 4 hdcbb in first hdc. 1 hdcbb in each of next 5 hdc. *2 hdcbb in next hdc. 1 hdcbb in each of next 7 hdc. Rep from * to last 6 hdc. 1 hdcbb in each of next 5 hdc. 4 hdcbb in last hdc. 63 hdc. Turn.

- POPPY STITCH KEY**
- = chain (ch)
 - = slip stitch (sl st)
 - + = single crochet (sc)
 - ⌋ = double crochet (dc)
 - ⌋⌋ = treble crochet (tr)
 - ⌋ = worked in back loop only
 - ⌋ = worked in front loop only



POPPY

6th row: With D, ch 2. 1 hdc in each of next first 10 hdc. *2 hdc in first hdc. 1 hdc in each of next 8 hdc. Rep from * to last 8 hdc. 1 hdc in each of last 9 hdc. 68 hdc. Fasten off. Turn.

7th row: Join E with sl st to first hdc. Ch 2. 4 hdcbb in first hdc. 1 hdcbb in each of next 8 hdc. *2 hdcbb in next hdc. 1 hdcbb in each of next 9 hdc. Rep from * to last 9 hdc. 1 hdcbb in each of next 8 hdc. 4 hdcbb in last hdc. 79 hdc. Turn.

8th row: With E, ch 2. 1 hdc in each of first 12 hdc. *2 hdc in first hdc. 1 hdc in each of next 10 hdc. Rep from * to last 12 hdc. 1 hdc in each of last 12 hdc. 84 hdc. Fasten off. Turn.

9th row: Join B with sl st to first hdc. Ch 2. 4 hdcbb in first hdc. 1 hdcbb in each of next 11 hdc. *2 hdcbb in next hdc. 1 hdcbb in each of next 11 hdc. Rep from * to last 12 hdc. 1 hdcbb in each of next 11 hdc. 4 hdcbb in last hdc. 95 hdc. Turn.

10th row: With B, ch 2. 1 hdc in each of first 15 hdc. *2 hdc in first hdc. 1 hdc in each of next 12 hdc. Rep from * to last 15 hdc. 1 hdc in each of last 15 hdc. 100 hdc. Fasten off.

Sew bottom of Rainbow to inside of Sack behind Emerald City section.

Poppies (make 12)

With smaller hook and G, ch 2.

1st rnd: 6 sc in 2nd ch from hook. Join with sl st to front loop only of first sc.

2nd rnd: Ch 2. Skip 1st sc. *Working in front loops only, Sl st in next sc. Ch 2. Rep from * around. Join with sl st to front loop only of first sc. Fasten off.

3rd rnd: Join F with sl st to rem back loop of first sc of 1st rnd. Working in rem back loops of 1st rnd, 3 sc in each sc around. Join with sl st to front loop only of first sc. 18 sc.

4th rnd: Ch 3. Working in front loops only, 1 dc in first sc. 2 tr in each of next 6 sc. 1 dc in next sc. Ch 3. Sl st in same sp as last dc. Sl st in each of next 2 sc. Ch 3. 1 dc in same sp as last sl st. 2 tr in each of next 6 sc. 2 dc in next dc. Leave rem sc unworked. Fasten off.

5th rnd: Join F with sl st to rem back loop of 5th sc of 4th rnd. Working in rem back loops of 4th rnd, Ch 3 (counts as dc), 1 dc in first sc. 2 tr in each of next 6 sc. 1 dc in next sc. Ch 3. Sl st in same sp as last dc. Sl st in each of next 2 sc. Ch 3. 1 dc in same sp as last sl st. 2 tr in each of next 6 sc. 2 dc in next dc. Leave rem sc unworked. Fasten off.

Ruby Slippers (make 4)

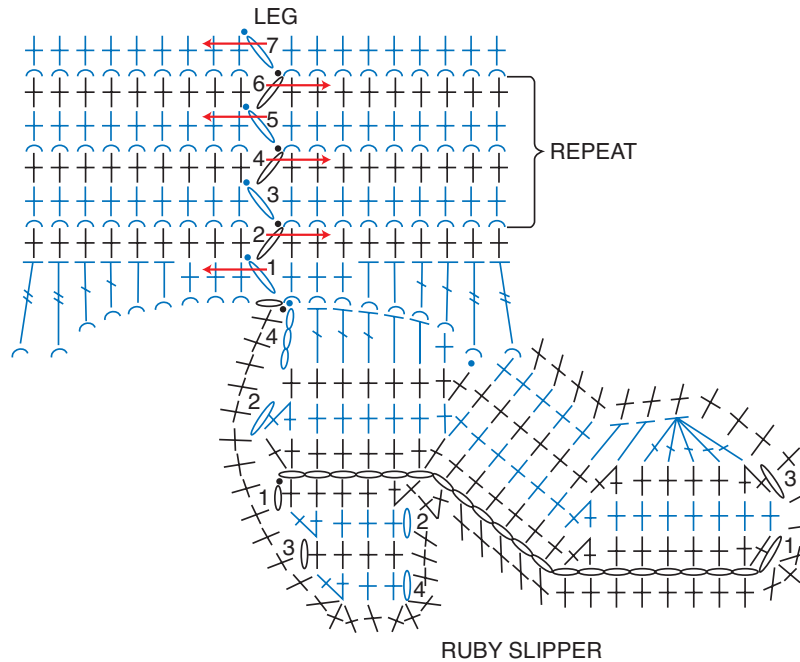
See diagram on page 7.

With smaller hook and F, ch 21.

1st row: (RS). 2 sc in 2nd ch from hook. 1 sc in each of next 5 ch. Sc2tog. 1 sc in each of next 6 ch. 2 sc in next ch. 1 sc in each of next 4 ch. 2 sc in last ch. 22 sc. Turn.

2nd row: Ch 1. Sc2tog. 1 sc in each of next 5 sc. 2 sc in next sc. 1 sc in each of next 5 sc. Sc2tog. 1 sc in each of next 7 sc. 21 sc. Turn.

3rd row: Ch 1. Sc2tog. 1 sc in each of next 4 sc. Sc2tog. 1 sc in each of next 6 sc. 2 sc in next sc. 1 sc in each of next 6 sc. 20 sc. Turn.



RUBY SLIPPER & BOW STITCH KEY

- = chain (ch)
- = slip stitch (sl st)
- + = single crochet (sc)
- ┆ = half double crochet (hdc)
- ┆ = double crochet (dc)
- ┆ = treble crochet (tr)
- ┆ = double crochet 5 together (dc5tog)
- ⤵ = worked in back loop only
- ↔ = direction of work

4th row: Ch 3 (counts as dc). PM on last st. 1 dc in each of next 3 sc. 1 hdc in each of next 2 sc. 1 sc in next sc. Sl st in next sc. 1 sc in each of next 5 sc. 1 hdc in each of next 2 sc. Dc5tog. 16 sts. Fasten off.

Heel: Holding Slipper upside down and working across opposite side of foundation ch, join F with sl st to first ch.

1st row: (RS). Ch 1. 1 sc in each of first 4 ch. Sc2tog. 5 sc. Turn.

2nd row: Ch 1. 1 sc in each of first 3 sc. Sc2tog. 4 sc. Turn.

3rd row: Ch 1. 1 sc in each sc to end of row. 4 sc. Turn.

4th row: Ch 1. 1 sc in each of first 2 sc. Sc2tog. 3 sc. Fasten off.

Join Slippers: Left Foot: Holding 2 Slippers tog with WS facing each other, and with smaller hook, join F with sl st at marker. Working through both thicknesses, proceed as follows:

1st row: (RS). Ch 1. Work 12 sc down back of Slipper to bottom of heel. 3 sc in first bottom st of

Heel. 1 sc in next sc. 3 sc in next sc. Work 3 sc up side of Heel. Sc2tog at arch. Working across opposite side of foundation ch, 13 sc across bottom of Slipper. 3 sc at bottom of Toe. 6 sc evenly around Toe to Dc5tog. 1 sc in each of next 7 sts. Fasten off.

Right Foot: Join as for Left Foot reversing RS and WS to create Right and Left Foot.

Leg
Note: Join and then turn work at end of each rnd, alternating working from RS and WS in order to create a straight seam.

With WS facing and smaller hook, join A to first unjoined st at top back of Slipper.

1st rnd: (RS). Ch 1. Working in back loops only, 1 sc in each of first 3 sts. 1 hdc in each of next 2 sts. 1 dc in each of next 2 sts. 1 tr in each of next 2 sts. Working across opposite side of Slipper, 1 tr in

BERNAT® OVER THE RAINBOW CROCHET SNUGGLE SACK | CROCHET

each of next 2 sts. 1 dc in each of next 2 sts. 1 hdc in each of next 2 sts. 1 sc in each of next 3 sts. Join with sl st to first sc. 18 sc. Turn.

2nd rnd: (WS). Ch 1. 1 sc in each st around. Join G with sl st to first sc. Turn.

3rd rnd: (RS). With G, ch 1. Working in back loops only, 1 sc in each sc around. Join with sl st to first sc. Turn.

4th rnd: (WS). Ch 1. 1 sc in each sc around. Join A with sl st to first sc. Turn.

5th rnd: (RS). With A, ch 1. Working in back loops only, 1 sc in each sc around. Join with sl st to first sc. Turn.

6th rnd: (WS). Ch 1. 1 sc in each sc around. Join G with sl st to first sc. Turn.

Rep 3rd to 6th rnds once more. Fasten off.

Bow (make 2). See diagram on page 7.

With F and smaller hook, ch 3. Join with sl st to form ring.

1st row: (RS). Ch 4. 3 tr in ring. Ch 4. Sl st in ring. Ch 4. 3 tr in ring. Ch 4. Sl st in ring. Fasten off.

Wrap yarn around center of bow to cinch. Sew one Bow to each Slipper as seen in photo.

FINISHING

Fold Sack flat and sew base of Gingham section closed. Sew top of Legs to bottom of Sack as seen in photo.

Sew 6 Poppies to top and bottom of Yellow Brick Road section at front of Sack as seen in photo.

